



1 Sam King Walk, London, SE5 7FP

Immaculately presented apartment with generous private patio moments from the greenery of Burgess Park in ever so popular Camberwell.

The property boasts a spacious open plan living area leading into the private patio, a contemporary and fully equipped kitchen, a very good sized double bedroom, and a stylish bathroom. Additional storage space can be found in the hallway cupboards.

- Contemporary Apartment
- Generous Private Patio
- Fully Equipped Kitchen
- Stylish Bathroom
- Steps from Burgess Park
- Close to Elephant & Castle station
- Close to Denmark Hill station
- Great Bus Connections

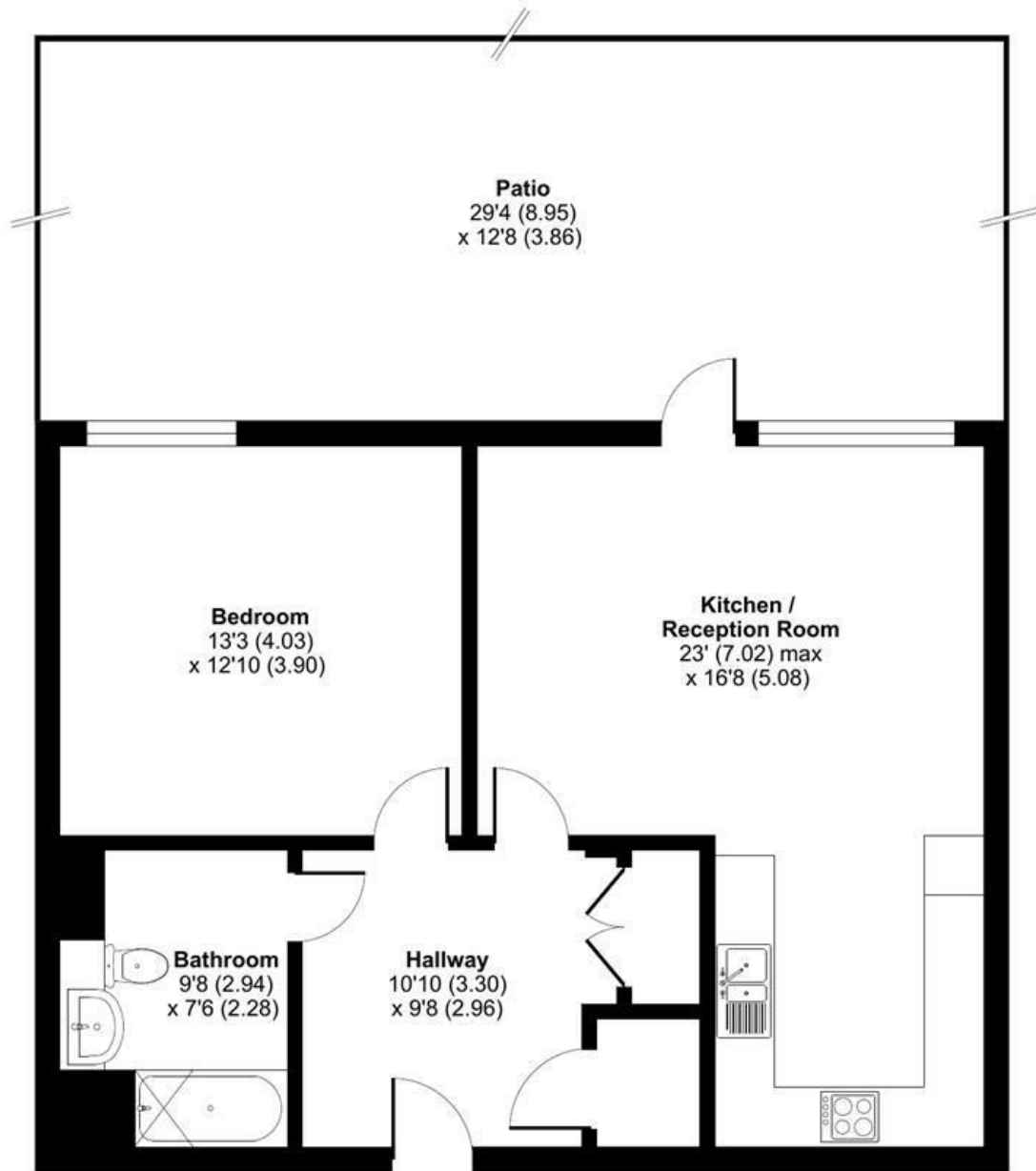
Alex & Matteo
ESTATE AGENTS

£2,000 Per month

Sam King Walk, London, SE5

Approximate Area = 700 sq ft / 65 sq m

For identification only - Not to scale



GROUND FLOOR



Floor plan produced in accordance with RICS Property Measurement Standards incorporating International Property Measurement Standards (IPMS2 Residential). © nitchcom 2024. Produced for Alex & Matteo Estate Agents. REF: 1167281

Energy Efficiency Rating		
	Current	Potential
Very energy efficient - lower running costs		
(92 plus) A		
(81-91) B	84	84
(69-80) C		
(55-68) D		
(39-54) E		
(21-38) F		
(1-20) G		
Not energy efficient - higher running costs		
England & Wales	EU Directive 2002/91/EC	